

3 YEARS
WARRANTY



COB46 Video



COB46
LED DOWNLIGHT

10W / 20W / 30W

specification

PRODUCT NAME :	LED DOWNLIGHT
MODEL NO. :	COB46 10W / COB46 20W / COB46 30W
SPECIFICATION :	AC200-240V, 50-60Hz ; 10W/ 20W / 30W
WORKING TEMP :	-20-50(°C)
POWER FACTOR :	>0.9
CRI(RA) :	>80
COLOR :	White/Black
LIGHT SOURCE :	COB Chip
LUMEN :	100 LM/W
BEAM ANGLE :	45°
PRODUCT SIZE :	90*90mm / 130*152mm / 170/*185mm
IP :	IP20
APPLICATION :	Home, Shop, Hotel, Hallway.. etc
WARRANTY :	3 years
STANDARD :	CE

Color Temperature:

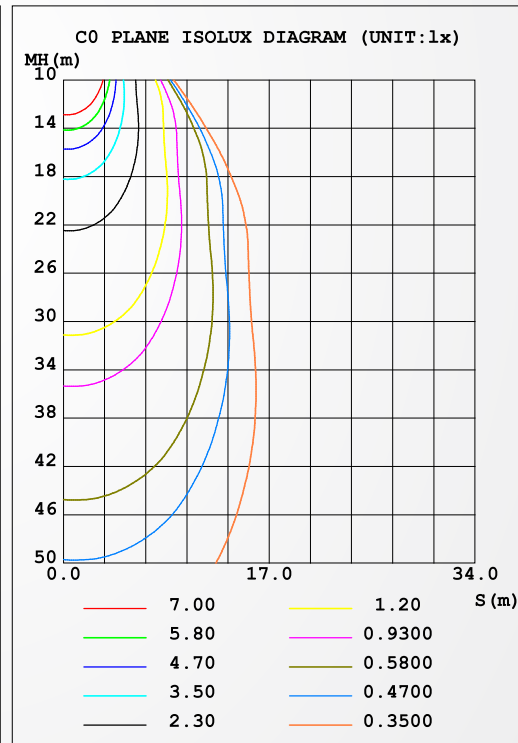
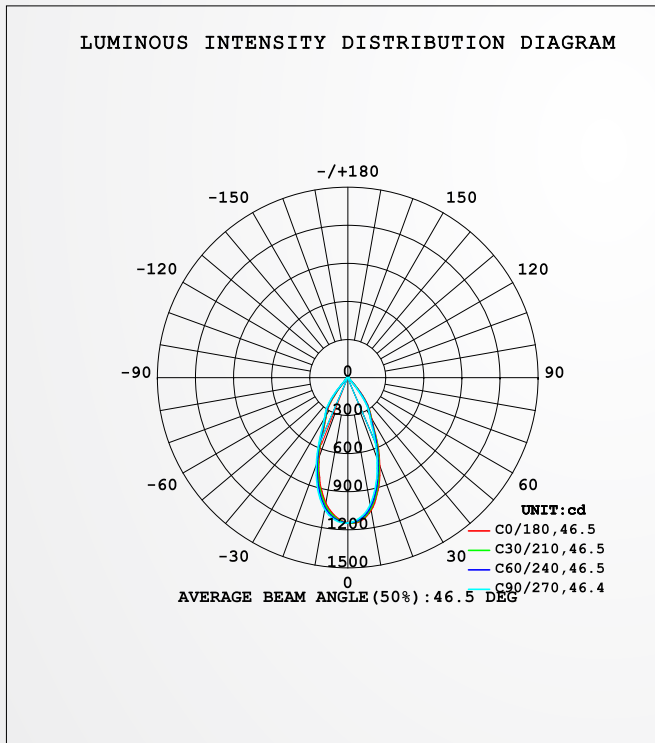
6500K / 4000K / 3000K

LUMINAIRE PHOTOMETRIC TEST REPORT



NAME: LED DOWNLIGHT	TYPE: COB	WEIGHT:
SPEC.:	DIM.:	SERIAL No.:
MFR.: NEXLEDS	SUR.:	Shielding Angle:

DATA OF LAMP		PHOTOMETRIC DATA				Eff: 89.31 lm/W
MODEL	COB46 10W	I _{max} (cd)	1149	S/MH (C0/180)	0.71	
NOMINAL POWER (W)	10	LOR (%)	100.0	S/MH (C90/270)	0.76	
RATED VOLTAGE (V)	220	TOTAL FLUX (lm)	827.62	η UP, DN (C0-180)	2.0, 47.0	
NOMINAL FLUX (lm)	827.625	CIE CLASS	DIRECT	η UP, DN (C180-360)	1.2, 49.8	
LAMPS INSIDE	1	η up (%)	3.2	CIBSE SHR NOM	0.75	
TEST VOLTAGE (V)	219.5	η down (%)	96.8	CIBSE SHR MAX	0.75	



C Range: 0 - 360DEG
C Interval: 15.0DEG
Test Speed: HIGH
Temperature: 27.3DEG
Operators: JACK
Test Date: 2019-08-01

γ Range: 0 - 180DEG
γ Interval: 1.0DEG
Test System: EVERFINE GO-2000B_V1 SYSTEM V2.0.407.13
Humidity: 65.0%
Test Distance: 11.565m [K=1.0000]
Remarks:



JOIN US ON OUR FACEBOOK PAGE +

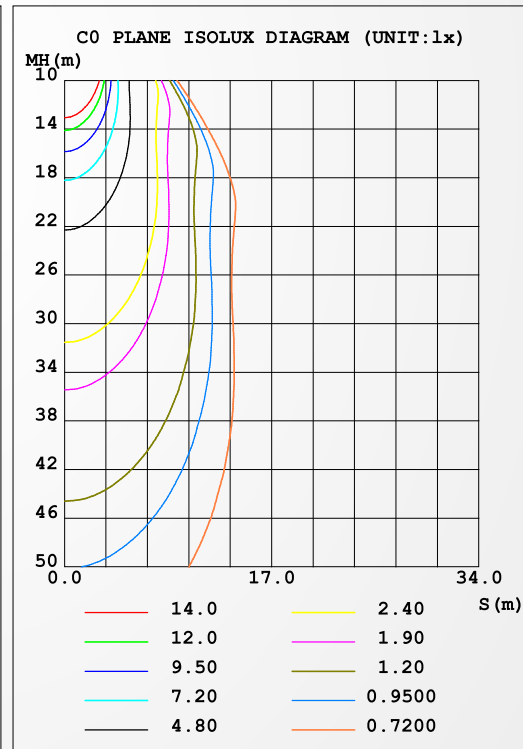
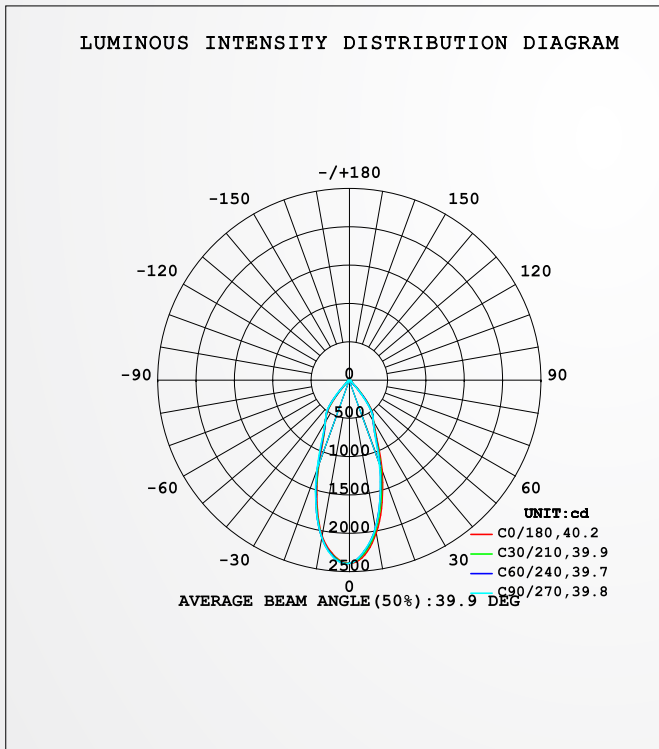
NEXTLITE PRODUCTS

LUMINAIRE PHOTOMETRIC TEST REPORT



NAME: LED DOWNLIGHT	TYPE: COB	WEIGHT:
SPEC.:	DIM.:	SERIAL No.:
MFR.: NEXLEDS	SUR.:	Shielding Angle:

DATA OF LAMP		PHOTOMETRIC DATA				Eff: 82.37 lm/W
MODEL	COB46 20W	Imax (cd)	2397	S/MH (C0/180)		0.64
NOMINAL POWER (W)	20	LOR (%)	100.0	S/MH (C90/270)		0.67
RATED VOLTAGE (V)	220	TOTAL FLUX (lm)	1549.0	η UP, DN (C0-180)		2.0, 46.8
NOMINAL FLUX (lm)	1548.98	CIE CLASS	DIRECT	η UP, DN (C180-360)		1.2, 49.9
LAMPS INSIDE	1	η up (%)	3.3	CIBSE SHR NOM		0.50
TEST VOLTAGE (V)	219.5	η down (%)	96.7	CIBSE SHR MAX		0.60



C Range: 0 - 360DEG
C Interval: 15.0DEG
Test Speed: HIGH
Temperature: 27.3DEG
Operators: JACK
Test Date: 2019-08-01

γ Range: 0 - 180DEG
γ Interval: 1.0DEG
Test System: EVERFINE GO-2000B_V1 SYSTEM V2.0.407.13
Humidity: 65.0%
Test Distance: 11.565m [K=1.0000]
Remarks:



JOIN US ON OUR FACEBOOK PAGE +

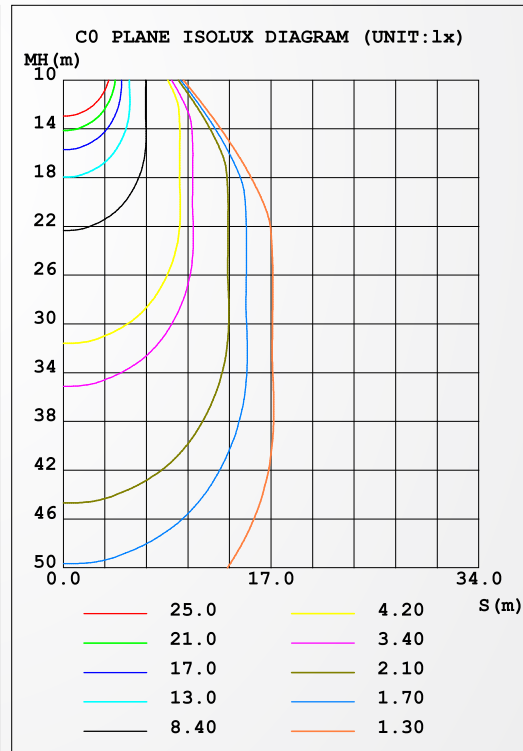
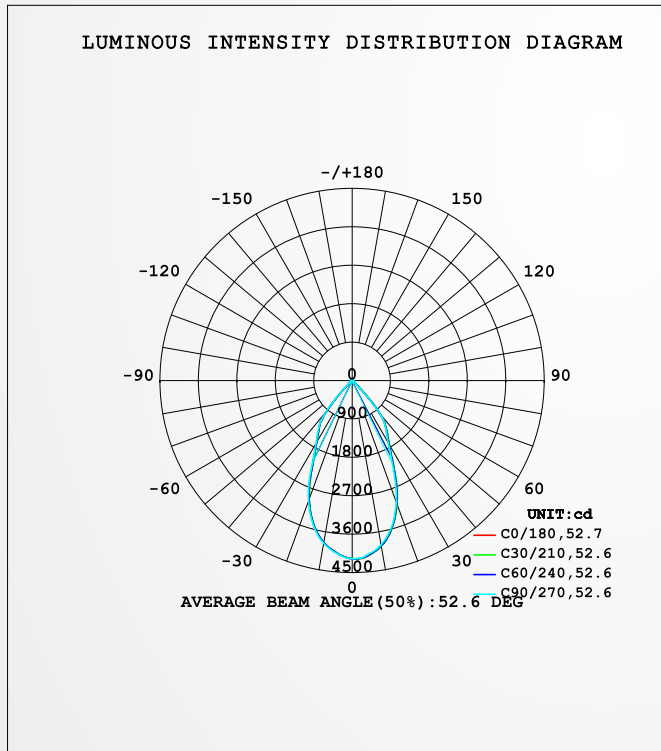
NEXLITE PRODUCTS

LUMINAIRE PHOTOMETRIC TEST REPORT



NAME: LED DOWNLIGHT	TYPE: COB	WEIGHT:
SPEC.:	DIM.:	SERIAL No.:
MFR.: NEXLEDS	SUR.:	Shielding Angle:

DATA OF LAMP		PHOTOMETRIC DATA				Eff: 126.60 lm/W
MODEL	COB46 30W	Imax (cd)	4179	S/MH (C0/180)	0.82	
NOMINAL POWER (W)	30	LOR (%)	100.0	S/MH (C90/270)	0.83	
RATED VOLTAGE (V)	220	TOTAL FLUX (lm)	3789.5	η UP, DN (C0-180)	2.1, 48.4	
NOMINAL FLUX (lm)	3789.54	CIE CLASS	DIRECT	η UP, DN (C180-360)	1.3, 48.2	
LAMPS INSIDE	1	η up (%)	3.3	CIBSE SHR NOM	0.75	
TEST VOLTAGE (V)	219.5	η down (%)	96.7	CIBSE SHR MAX	0.90	



C Range: 0 - 360DEG
C Interval: 15.0DEG
Test Speed: HIGH
Temperature: 27.3DEG
Operators: JACK
Test Date: 2019-08-01

γ Range: 0 - 180DEG
γ Interval: 1.0DEG
Test System: EVERFINE GO-2000B_V1 SYSTEM V2.0.407.13
Humidity: 65.0%
Test Distance: 11.565m [K=1.0000]
Remarks:



JOIN US ON OUR
FACEBOOK PAGE +

NEXTLITE PRODUCTS